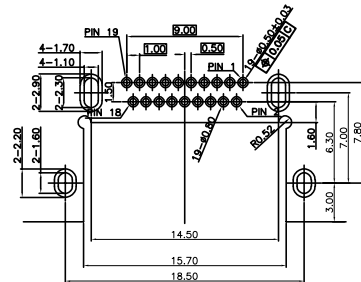
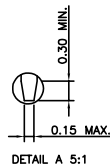
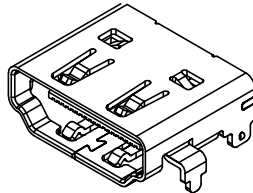
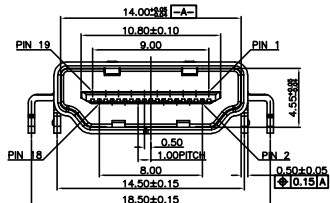
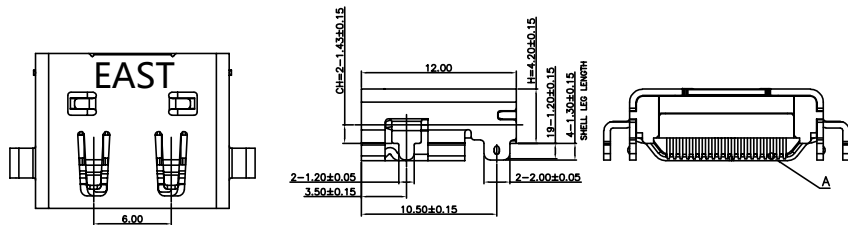


REV.	ECN NO.	MODIFY MATTER	DATE	APPROVED
A		RELEASE TO PRODUCTION		

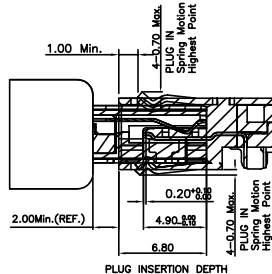
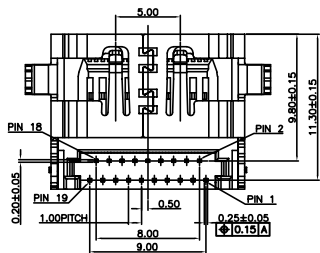
NOTES:

- 1.ELECTRONIC:**
CONTACT RESISTANCE: 20mohm MAX
INSULATION RESISTANCE: 1000 Mohm MIN
WITHSTAND VOLTAGE:AC 500V,1min.
- 2.MECHANICAL:**
DURABILITY: 10000 CYCLE.
- 3.ENVIRONMENT CHARACTERISTICS:**
OPERING TEMPERATURE:-55°C TO +105°C
- 4.RECOMANDER PCB THICKNESS 1.60MM**
- 5.MATERIAL LIST:**

3	SHELL	1	STAINLESS STEEL T=0.50	NI PLATED
2	CONTACT	19	COPPER ALLOY T=0.20	AU/TIN PLATED
1	HOUSING	1	THERMOPLASTIC	(UL 94V-0) BLACK
No.	PART NAME	QTY	MATERIAL	REMARK



RECOMMEND P.C.B LAYOUT (THICKNESS 1.2mm)
 (COMPONENT SIDE) TOLERANCE±0.05mm



TOLERANCES UNLESS OTHERWISE SPECIFIED:

X	---
X.X	± 0.38
X.XX	± 0.25
X.XXX	± 0.10
Angle	± 1°

CUSTOMER COPY	深圳市东方御业科技有限公司	
	WWW.DFYCONN.COM TEL:0755-27155560	
DRAWN: CHENLEI	2017/09/10	TITLE: HDMI 19P AF DIP 正向沉板 H4.20
CHECKED: CHENLEI	2017/09/10	(RevS)
APPROVED: QINKAIXING	2017/09/10	PART NO: EAST-HD19B3N123SR
		UNIT: mm SCALE: N/A SHEET: 1:1 REV:

THESE DRAWING AND SPECIFICATION ARE THE PROPERTY OF Shenzhen Dongfengyue ELECTRONIC CO., LTD., SHALL NOT BE REPRODUCED.