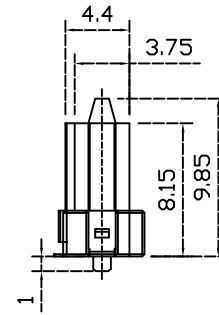
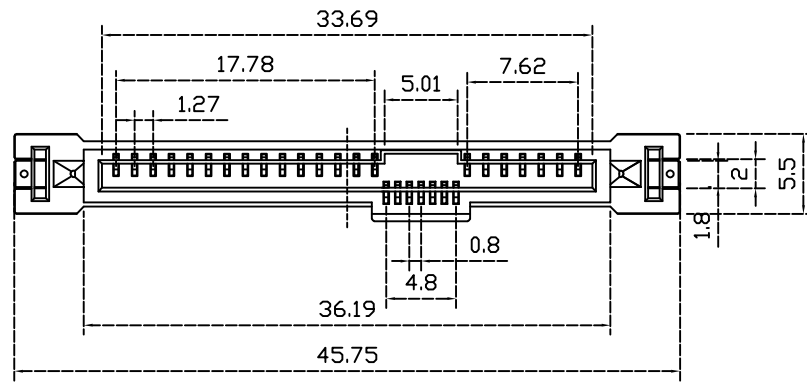


REV.	ECN NO.	MODIFY MATTER	DATE	APPROVED
A		RELEASE TO PRODUCTION		



NOTES:

1. MATERIAL:

HOUSING: LCP, 30% G/F UL94 V-0 COLOR: BLACK

CONTACT: BRASS

SHELL: BRASS:

2. FINISH:

CONTACT: 15U" GOLD/TIN PLATING ON CONTACT AREA

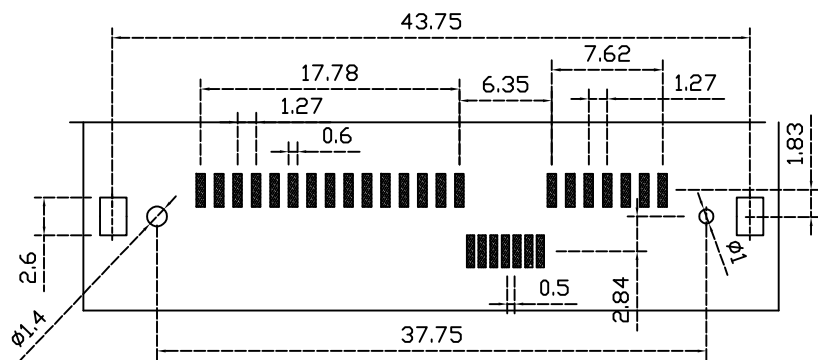
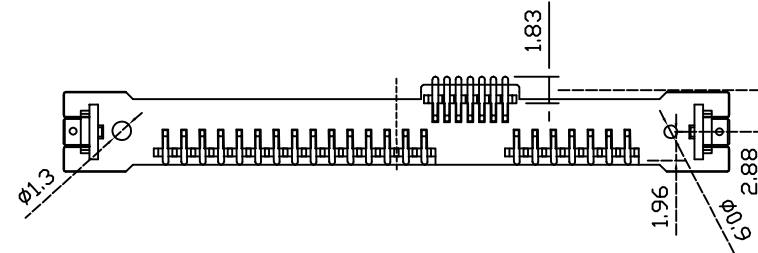
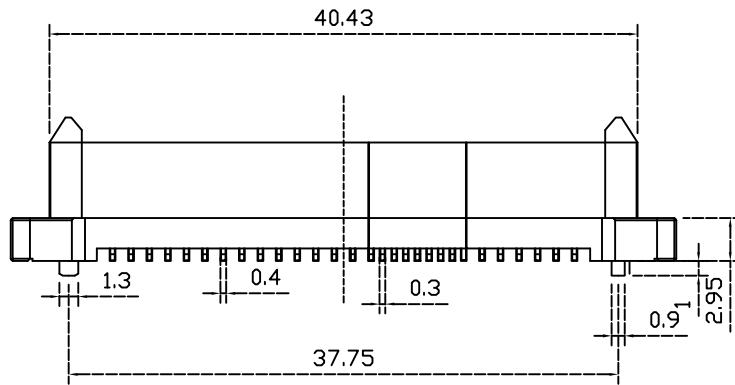
100U" MIN. TIN PLATING ON SOLDER TAILS

50U" MIN. NICKEL UNDERPLATING OVER ALL

SHELL: 50U" MIN. NICKEL UNDERPLATING OVER ALL

3. ENVIRONMENTAL:

OPERATURE RANGE: -25° C TO +85° C



RECOMMEND P.C.BOARD MOUNTING DIMENSIONS T=1.20MM

PCB LAYOUT

EAST-SAS2918SDS 14L0CR

90: 卧式
18: 直立
SD: SMT
DP: DIP
P=公
S=母
P: PBT
A: PA66
L: LCP
包装
A-Tube,
B-Reel,
C-Tray

TOLERANCES UNLESS OTHERWISE SPECIFIED: X. — X.X ± 0.38 X.XX ± 0.25 X.XXX ± 0.10 Angle ± 1°	CUSTOMER COPY 深圳市东方御业科技有限公司 WWW.DFYCONN.COM TEL:0755-27155560	
	DRAWN: CHENLEI	2017/09/10
CHECKED: CHENLEI	2017/09/10	PART NO: EAST-SAS2918SDS14L0CR
APPROVED: QINKAIXING	2017/09/10	UNIT: mm SCALE: N/A SHEET: 1:1 REV.