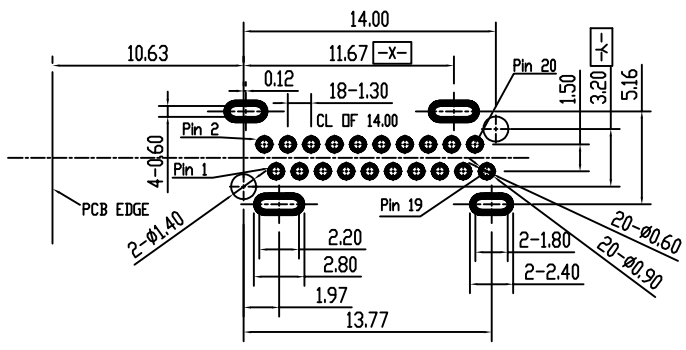
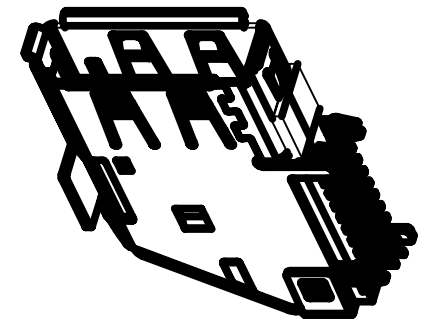
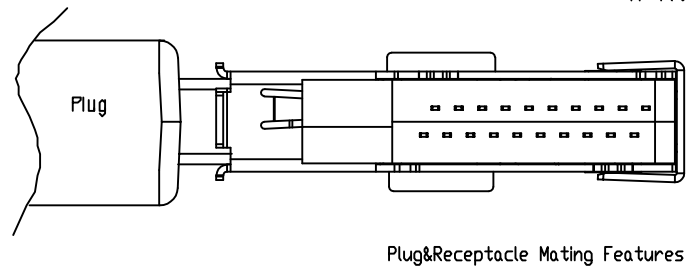
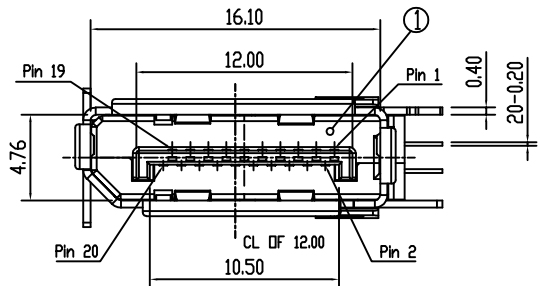
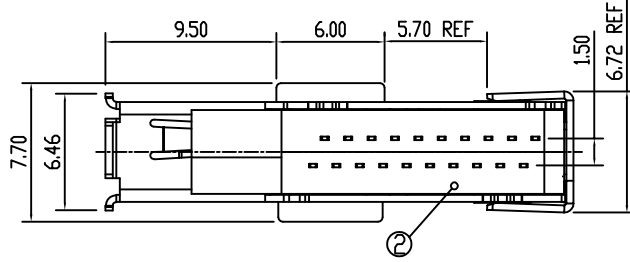
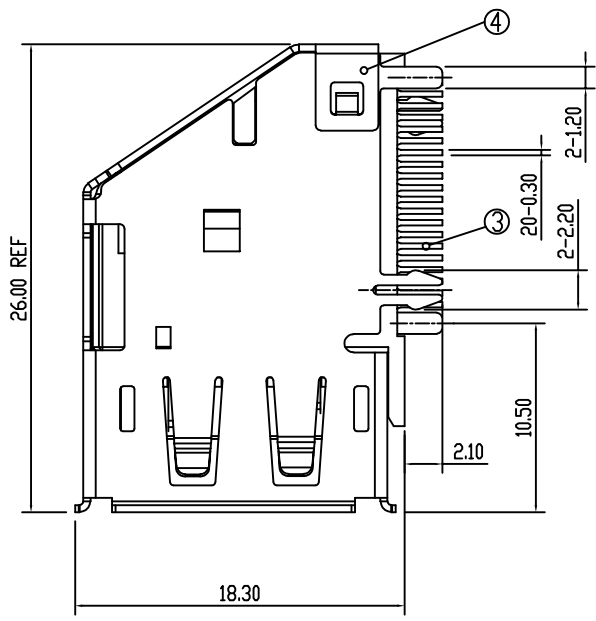


REV.	ECN NO.	MODIFY MATTER	DATE	APPROVED
A		RELEASE TO PRODUCTION	2017/04/10	Mike

NOTES:

- ELECTRICAL CHARACTERISTICS:
 - CONTACT CURRENT RATING: 0.5A MIN.
APPLIED VOLTAGE RATING: 40V AC
 - CONTACT RESISTANCE: 30 MILLIOHMS MAXIMUM.
AFTER TEST: CHANGE FROM INITIAL VALUE 3DMILLIOHMS MAX.
 - SHELL RESISTANCE:
AFTER TEST: CHANGE FROM INITIAL VALUE 50MILLIOHMS MAX.
 - DIELECTRIC WITHSTANDING VOLTAGE: 500V AC RMS.
 - INSULATION RESISTANCE:
UNMATED PLUG: 100 MEGAOHMS MIN. AT 500V DC.
MATED PLUG: 10 MEGAOHMS MIN. AT 150V DC.
- MECHANICAL CHARACTERISTICS:
 - CONNECTOR MATING FORCE: 4.5Kgf MAX.
 - CONNECTOR UNMATING FORCE: 1.0~4.0 Kgf.
 - DURABILITY: 10000 CYCLES.
 - OPERATING TEMPERATURE RANGE: -40~85°C;
HUMIDITY: 85% RH MAX.
- RECOMMENDED PROCESS:
WAVE SOLDER, PEAK TEMPERATURE 260°C, 10SEC MAX.
- ROHS COMPLIANT AND HALOGEN-FREE.



RECOMMENDED P.C.B LAYOUT (COMPONENT SIDE VIEW)
TOL 15±0.05 THK=1.60 ALL POSITION TOL ±0.05 X1Y1

PIN NUMBER	SOURCE-SIDE PIN ASSIGNMENT	SINK-SIDE PIN ASSIGNMENT	PIN NUMBER	SOURCE-SIDE PIN ASSIGNMENT	SINK-SIDE PIN ASSIGNMENT
1	ML_Lane 0(p)	ML_Lane 3(n)	11	GND	GND
2	GND	GND	12	ML_Lane 3(n)	ML_Lane 0(p)
3	ML_Lane 0(n)	ML_Lane 3(p)	13	CONFIG1	CONFIG1
4	ML_Lane 1(p)	ML_Lane 2(n)	14	CONFIG2	CONFIG2
5	GND	GND	15	AUX CH(p)	AUX CH(p)
6	ML_Lane 1(n)	ML_Lane 2(p)	16	GND	GND
7	ML_Lane 2(p)	ML_Lane 1(n)	17	AUX CH(n)	AUX CH(n)
8	GND	GND	18	HOT PLUG DETECT	HOT PLUG DETECT
9	ML_Lane 2(n)	ML_Lane 1(p)	19	RETURN	RETURN
10	ML_Lane 3(p)	ML_Lane 0(n)	20	DP PWR	DP PWR

TOLERANCES UNLESS OTHERWISE SPECIFIED:
X. ---
X.X ± 0.38
X.XX ± 0.25
X.XXX ± 0.20
Angle ± 3°

THESE DRAWING AND SPECIFICATION ARE THE PROPERTY OF Shenzhen Dongfangyuye CO.,LTD. SHALL NOT BE REPRODUCED.

INSPECTION COPY
DRAWN: Li yu
CHECKED: Mike
APPROVED: Mike

深圳市东方御业科技有限公司
WWW.DFYCONN.COM TEL:0755-27155560

TITLE: DISPLAYPORT CONNECTOR
PART NO: EAST-DP20P18302R
UNIT: mm
SCALE: N/A
SHEET: 1/1
REV: A

ITEM	DESCRIPTION	QTY	MATERIAL	REMARK
1	TONGUE	1	HI-TEMPERATURE THERMOPLASTIC UL94V-0	COLOR:BLACK
2	HOUSING	1	HI-TEMPERATURE THERMOPLASTIC UL94V-0	COLOR:BLACK
3	CONTACT	20	COPPER ALLOY	Hi SnPb 50% underplating 30%Sn 20% contact area, 20% Sn 80% Ni at solder area.
4	SHELL	1	COPPER ALLOY	Hi SnPb 50% at solder area.