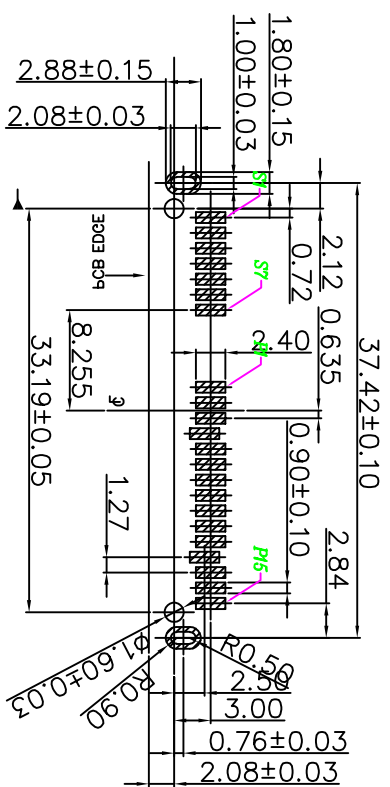
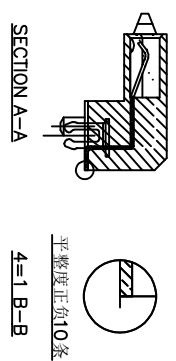
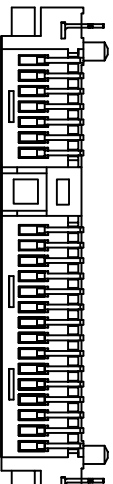
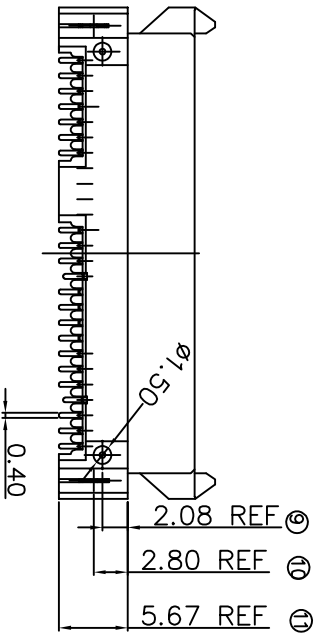
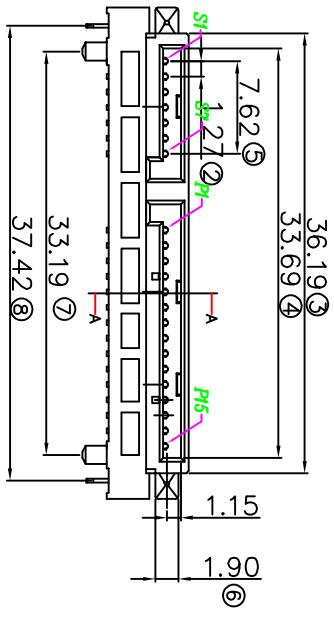
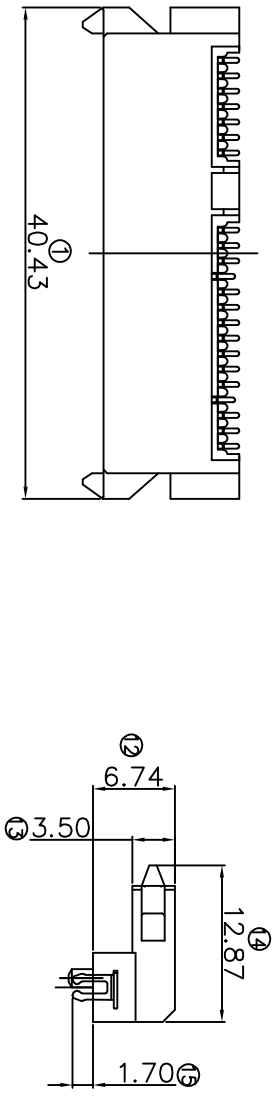


REV.	ECN NO.	MODIFY MATTER	DATE	APPROVED
A		RELEASE TO PRODUCTION		

**SPECIFICATION:**  
 MATERIAL: HOUSING: LCP UL 94V-0, COLOR: BLACK  
 CONTACT: PHOSPHOR BRONZE T=0.25mm  
 PEG: BRASS T=0.30mm  
 FINISH:  
 CONTACT: GOLD/TIN PLATING ON CONTACT AREA  
 100u" MIN. TIN-LEAD PLATING ON SOLDERTAILS  
 50u" MIN. NICKEL UNDERPLATING OVER ALL  
 PEG: 100u" MIN. TIN-LEAD PLATING ON SOLDERTAILS  
 50u" MIN. NICKEL UNDERPLATING OVER ALL



RECOMMEND PCB LAYOUT (T=1.2)  
 PCB TOLERANCE: ±0.05

Signal Segment	Name	Type
P1	V3.3	GND
S1	GND	A+
S2	A+	A-
S3	A-	GND
S4	GND	B-
S5	B-	B+
S6	B+	GND
S7	GND	

Power Segment	Name	Type	Power Segment	Name	Type
P1	V3.3	GND	P9	V5	GND
P2	V3.3	GND	P10	GND	
P3	V3.3	DAS/DSS	P11	GND	
P4	GND	GND	P12	GND	
P5	GND	V12	P13	V12	
P6	GND	V12	P14	V12	
P7	V5		P15	V12	
P8	V5				

TOLERANCES UNLESS OTHERWISE SPECIFIED:  
 X, X.X ± 0.38  
 X.XX ± 0.25  
 X.XXX ± 0.10  
 Angle ± 1°

THESE DRAWING AND SPECIFICATION ARE THE PROPERTY OF Shenzhen Dongfangyue ELECTRONIC CO., LTD. SHALL NOT BE REPRODUCED.

CUSTOMER COPY	PREPARED: CHENLEI	CHECKED: CHENLEI	APPROVED: QINMAIXING
---------------	-------------------	------------------	----------------------

**深圳市东方御业科技有限公司**  
 WWW.DFYCONN.COM TEL: 0755-27155560

DATE: 2017/09/10  
 PART NO: SATTA 7+15P 二合一母座  
 SMT H: 6.74下接触 (ReHS)

SCALE: N/A  
 SHEET: 1:1

EAST-SA90SDS67LDGR

90: 卧式  
 18: 直立  
 SD: SMT  
 DP: DIP  
 P = 公  
 S = 母  
 高度 H: 6.74mm  
 P: PRT  
 A: PA66  
 L: LCP

包装:  
 A-Tube,  
 B-Reel,  
 C-Troy  
 U = 上接触  
 D = 下接触