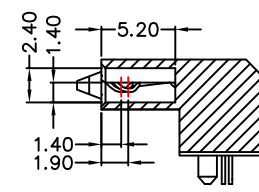
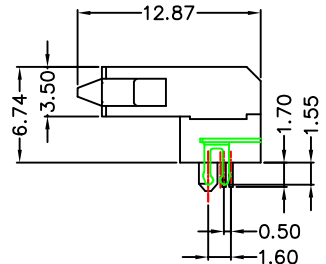
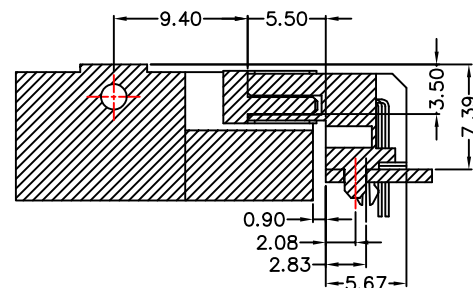
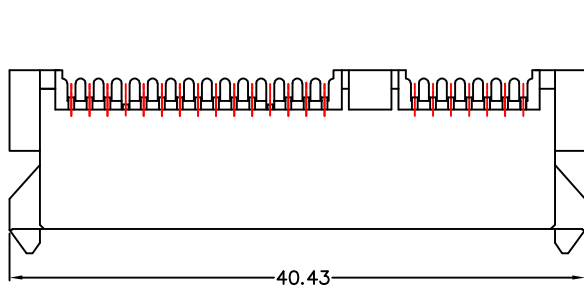
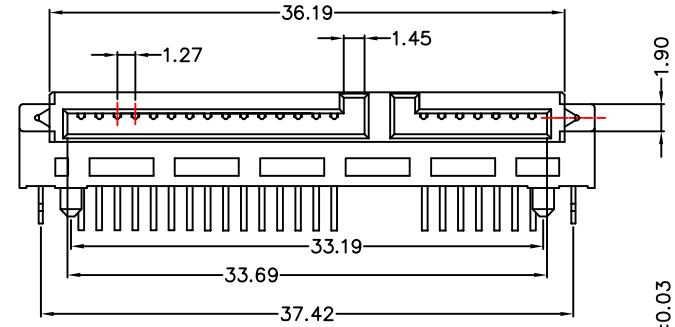


REV.	ECN NO.	MODIFY MATTER	DATE	APPROVED
A		RELEASE TO PRODUCTION		



SPECIFICATION:
MATERIAL:
HOUSING:LCP UL 94V-0
COLOR:BLACK
CONTACT:PHOSPHOR BRONZE T=0.25MM
PEG:BRASS T=0.30MM
FINISH:
CONTACT: 1U" GOLD/TIN PLATING ON CONTACT AREA
100u" MIN. TIN-LEAD PLATING ON SOLDER TAILS
50u" MIN.NICKEL UNDERPLATING OVER ALL
PEG:100u" MIN. TIN-LEAD PLATING ON SOLDER TAILS
50u" MIN.NICKEL UNDERPLATING OVER ALL



EAST-SA90 DP S 67 A U C R

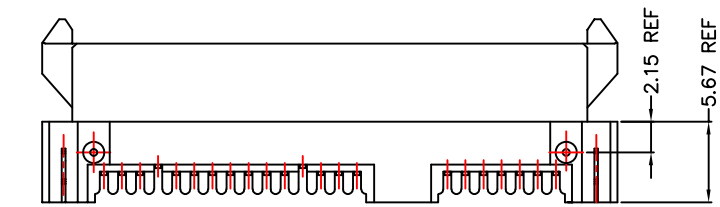
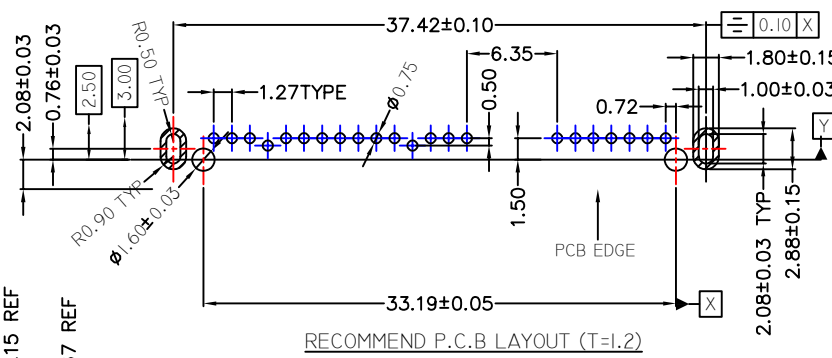
90:卧式
18:直立
SD:SMT
DP:DIP

P=公
S=母

高度
H:6.74MM

P:PBT
A:PA66
L:LCP

包装
A-TUBE,
B-REEL,
C-TRAY
U=上接触
D=下接触



TOLERANCES UNLESS OTHERWISE SPECIFIED: X. --- X. X ± 0.38 X. XX ± 0.25 X. XXX ± 0.10 Angle ± 1°		COSTOMER COPY		深圳市东方御业科技有限公司 WWW.DFYCONN.COM TEL:0755-27155560	
DRAWN: CHENLEI		2017/09/10		TITIAL: SATA 7+15P 二合一 母座 DIP H: 6.74 (ROHS)	
CHECKED: CHENLEI		2017/09/10		PART NO: EAST-SA90DPS67AUCR	
APPROVED: QINKAIXING		2017/09/10		DRAWING NO:	
THESE DRAWING AND SPECIFICATION ARE THE PROPERTY OF Shenzhen Dongfangyue ELECTRONIC CO., LTD.. SHALL NOT BE REPRODUCED.		UNIT: mm		SCALE: N/A	
				SHEET: 1:1	
				REV.	